

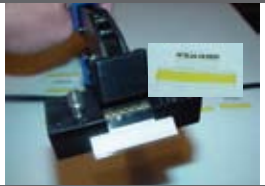
experts in productivity

Panasonic Factory Solutions Company of America

new splicing solutions



A) Tape Splicer Tool



B) Tape Splice w/ shim



C) Tool Carrier Cutting



D) Mounting Adapter Flange



Splicing Tapes & Extenders

New and improved splicing products at newly reduced prices

The tape splicer tool (A) has a simple easy-to-use design and is easier to maintain. The tape splice w/ shim (B) is a new addition that utilizes the two separate pieces (tape and copper splicing shims) and mounts them on one plastic tape. A true and quick one-handed operation which saves time and money.

The tool carrier (C) is a convenient tool for quickly cutting tape at an appropriate length to make the perfect splice every time.

Other new items are extenders and splicing tapes. Extenders attach easily to the tape that has been either cut or broken; thereby, allowing an extension to be added. Again, time and money are saved by not having to waste parts by peeling the tape back to get a starter strip.

All items are immediately available. Order today.

To order, contact your Account Coordinator at 847-495-6200 or online at www.panasonicfa.com

Part Numbers

Tools

A) Tape Splicer Crimper Tool	LOC1001
B) Tape Splice w/shim (8mm tape)	LOC1002
Tape Splice w/shim (12mm tape)	LOC1046
Tape Splice w/shim (16mm tape)	LOC1047
C) Tool Carrier Cutting Scissors	LOC1009
D) Mounting Adapter Flange	LOC1001FLANGE

Splicing Tapes & Extenders

8mm Double Splicing Tape	LOC1010
Extender, Tape 8mm x 496	LOC1011
Extender, Tape 12mm x 496	LOC1012
Extender, Tape 16mm x 496	LOC1013
Extender, Tape 24mm x 496	LOC1014
Extender, Tape 32 & 44mm x 496	LOC1015
Connectors, Tape 8mm w/ holes	LOC1004
Connectors, Tape 8mm w/o holes	LOC1005
Connectors, Tape 12mm w/o holes	LOC1006
Connectors, Tape 16mm w/o holes	LOC1007
Connectors, Tape 24mm w/o holes	LOC1008
Splicing Shims	LOC1003

Panasonic Factory Solutions Company of America

1-847-495-6100
PFSMarketing@us.panasonic.com
www.panasonicfa.com

Panasonic ideas for life