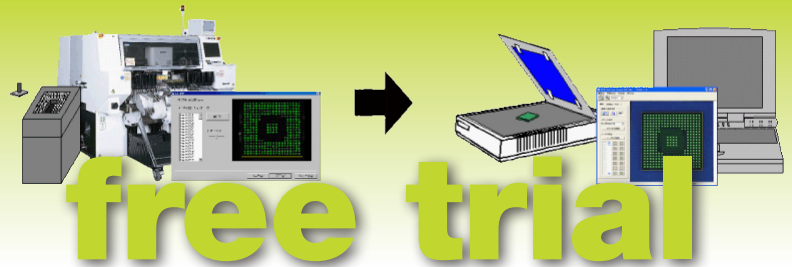


scan editor-kt

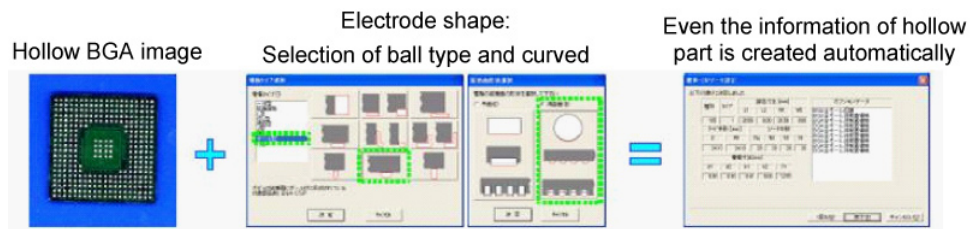


free trial

Scan Editor-KT allows you to create a highly efficient component library separate from your placement machine with an easy-to-operate, low cost system suited especially for Panasonic BM and CM series machines. This offline data creation frees up your placement machine availability while still providing the same level of data accuracy.

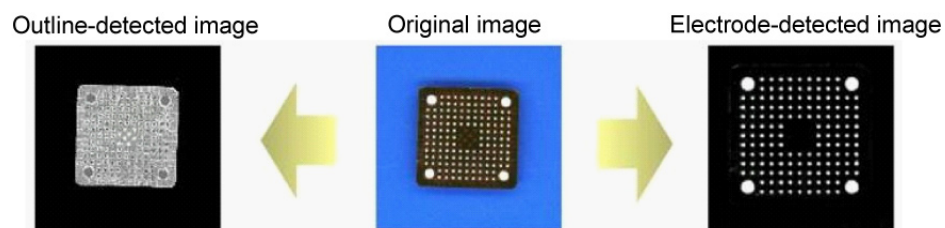
User-Friendly

Since data is created through the wizard, operation is easy. Even if electrodes are not detected automatically, the shapes of electrodes and the body can be added and modified with the same easy operability as commercially available drawing software.



Highly Accurate & Reliable Data Creation

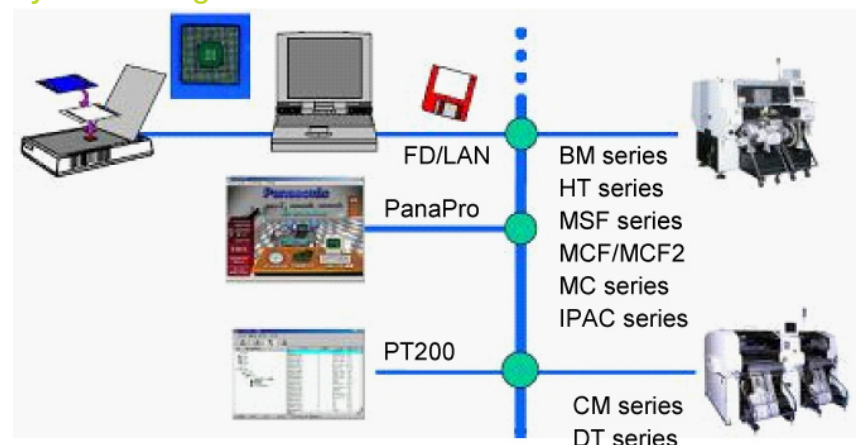
Since the dimensions are measured from the image of an actual component without the use of vernier calipers and scales, high-accuracy shape data can be generated. Moreover, the component classification and the optional data are automatically selected and set according to the measured dimensions; thus, highly reliable recognition data will be created.



Required Equipment:

- DOS/V Computer
 - Pentium family: 1 GHz or higher
 - 512MB memory
 - HDD min. 20 MB available space
 - OS: WindowsXP
- Flat-Bed-Scanner
 - White cold cathode fluorescent lamp
 - Emits light in two or more directions
 - 1200 dpi or higher
 - Recommended: Canon CanoScan8600F

System Configuration



Note: Free trial valid for 60 days.

Panasonic Factory Solutions Company of America

1-847-495-6100
 PFSAmarketing@us.panasonic.com
 www.panasoniccfa.com

Panasonic ideas for life